



4617 South Taylor Drive
 Sheboygan, WI 53081 | USA
 Toll-Free 1-800-558-7596
 (920) 694-4800 | (920) 694-4801 Fax
 service@torginol.com | www.torginol.com

Product Data Sheet



Metallic ColorPigments™ Pearlescent & Iridescent Metallic Pigments

For use with Resinous Flooring Systems

For more information, please visit our website at: www.torginol.com

DESCRIPTION

Product Name:

Pearlescent Metallic Pigments
 Trade Name: *ColorPigments™*

Manufacturer:

Torginol, Inc.
 4617 South Taylor Drive
 Sheboygan, WI 53081 USA
 (800) 558-7596 toll-free
 (920) 946-4800 telephone
 (920) 946-4801 facsimile
 www.torginol.com
 service@torginol.com

Torginol® Metallic *ColorPigments™* are special effect pigments composed of mica nano-particles coated with various organic and inorganic pigments to create pearlescent and iridescent effects that mimic the natural look of stone and rock formations. These unique pigments are designed to be field blended with a 100% solids clear epoxy binder. When the metallic particles are mixed with epoxy they give the coating a shine that reflects light and creates an eye catching dramatic color.

A few of the many advantages of the Metallic *ColorPigments™* coating system include the following:

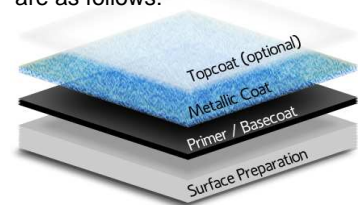
- Natural stone appearance
- Completely customizable
- Extremely durable coating
- Easy field blending & installation
- Multi-dimensional color hues
- Suitable for many environments
- Stylish, unique design
- Low maintenance system
- Economical & cost-effective
- Flooring artisan friendly



APPLICATION INSTRUCTIONS

The application instructions are intended to provide guidelines for installation of the Metallic *ColorPigments™*. There are no set rules for applying these pigments, as they are merely a creative component to the overall system. The basic steps for a successful flooring installation with Metallic *ColorPigments™* are as follows:

- 1) Surface Preparation
- 2) Primer / Basecoat
- 3) Metallic *ColorPigments™* Coat
- 4) Clear Topcoat (optional)



STEP 1: Surface Preparation

The surface preparation method is dependent upon the existing condition of the substrate and the guidelines from the manufacturer of the primer/basecoat you apply. In general, however, surface profiling should be achieved using a floor grinder machine, such as a diamond grinder or shot-blaster, which is designed for such preparation.

STEP 2: Primer / Basecoat

An opaque pigmented primer/basecoat MUST be applied to serve as a canvas for the translucent metallic coat. It is important to note that the color of the basecoat will influence the overall appearance of the floor since the metallic coat is translucent. For example, a white or light basecoat will create a lighter final appearance than a black or darker basecoat, which will darken the metallic look.

STEP 3: Metallic *ColorPigments™* Coat

Once the primer is dry the metallic pigment coat can be applied. The Metallic *ColorPigments™* packs are designed to be added to either 1, 2, 3 or 4 gallons of 100% solids epoxy coating, depending on the kit size. The recommended application rate is 80-100 square feet per gallon. This thickness will ensure the Metallic *ColorPigments™* work their magic on their patina.

<i>ColorPigments™ - Coverage Rate Guidelines</i>		
Square Feet Per Ounce		
Metallic <i>ColorPigments™</i>	Mixed Coating Material	Coverage Area (Square Feet)
4oz unit	1 gallon	75 – 100 ft²
8oz unit	2 gallons	150 – 200 ft²
12oz unit	3 gallons	225 – 300 ft²
16oz unit	4 gallons	300 – 400 ft²

Application is best achieved using using a 1/4" notched squeegee to ensure the product evenly coats the substrate. After the coating is evenly spread over the surface, backroll with a lint-free roller cover to ensure even coverage. Once the coating evenly covers the substrate it is time to freely swirl the roller in a random figure-eight motion to mimic the look of natural stone or rock formations. At this point, denatured alcohol may also be spritzed randomly over the surface to create other unique metallic effects.

STEP 4: Clear Topcoat

For enhanced durability, smooth texture and/or a semi-gloss or matte finish, the dried Metallic *ColorPigments™* coating surface can be lightly screened or sanded and a clear topcoat may be applied.

COLOR INDEX

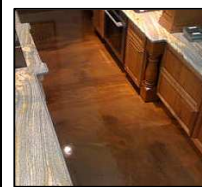
PEARLESCENT COLORS

PI010 / PEARL	PI020 / DOLPHIN	PI030 / MANATEE	PI040 / WHALE
PI050 / EMERALD	PI105 / GUAVA	PI110 / OVERCAST	PI115 / SANDBAR
PI120 / PALAPA	PI125 / BAMBOO	PI130 / LAGER	PI135 / DRIFTWOOD
PI140 / HAMMOCK	PI145 / RUM	PI150 / SHIPWRECK	PI155 / TIKI
PI160 / CABANA	PI165 / CANNON	PI170 / SANDAL	PI210 / PARROT
PI220 / BIKINI	PI230 / STARFISH	PI240 / AMERICANA	PI250 / SANGRIA
PI310 / MANDARIN	PI320 / MANGO	PI330 / CORAL	PI340 / GINGER
PI410 / BANANA	PI420 / PAPAYA	PI430 / DAYDREAM	PI440 / SUNSET
PI510 / MARGARITA	PI520 / AVOCADO	PI530 / SEAWEED	PI540 / PALM
PI550 / PIER	PI560 / KONA	PI610 / CARIBBEAN	PI620 / MAUI
PI630 / CURACAO	PI640 / AZURE	I650 / OCEAN	PI710 / REEF

IRIDESCENT COLORS

P2010 / SEASHELL	P2020 / OYSTER	P2030 / CLAM	P2040 / PRAWN
P2050 / URCHIN	P2060 / JELLYFISH	P2070 / SCALLOP	P2080 / SNAIL

RECOMMENDED USES



- Airports
- Art Centers
- Auditoriums
- Auto Dealerships
- Banks
- Banquet Halls
- Bars, Pubs & Taverns
- Boutiques
- Casinos
- Churches
- Concourses
- Corridors
- Country Clubs
- Department Stores
- Financial Institutions
- Foyers
- Galleries
- Garage Floors
- Gentlemen's Clubs
- Hotels
- Kitchens
- Lavatories
- Lobbies
- Lounges
- Museums
- Nightclubs
- Office Buildings
- Restaurants
- Retail Stores
- Salons
- Shopping Centers
- Showrooms
- Spas
- Sunrooms
- Supermarkets
- Universities
- Vestibules
- Wineries
- And more...