



## Resinous Flooring Media



*high purity color-coated quartz*



# Resinous Flooring Media

## Why resinous flooring?

For areas that require a safe / slip-resistant, clean, durable, and aesthetically appealing flooring solution, resinous flooring systems provide exceptional value and performance over pre-engineered floors. From locker rooms and industrial floors to pool decks and corridors, resinous flooring systems are continuing to gain popularity with architects and designers because of their unique ability to deliver slip-free safety, seamless cleanliness, stain resistance, unrivaled durability and endless design possibilities.

## What are *ColorGranules™*?

*ColorGranules™* make resinous flooring as safe and beautiful as it is ergonomic and cost-effective. *ColorGranules™*, also commonly referred to as colored quartz or aggregate, are composed of the finest uniformly shaped and sized quartz granules on Earth. This unique product is brilliantly color-coated with a superior resin system and high-quality color-fast pigments to provide optimal durability and extreme performance in the most demanding environments. In addition to their superior resilience to harsh chemicals and UV rays, *ColorGranules™* can be applied to achieve many different textures and levels of slip resistance to prevent slip and fall injuries and minimize liability.

*ColorGranules™* resinous flooring media is available in over 40 solid color-styles and two grades (40-S Broadcast & 25-A Trowel) that can be blended, mixed and matched to customize your floor and compliment any décor.

**DISCLAIMER:** The colors shown in this brochure may not be exact due to printing process limitations. For absolute color fidelity, colors should be selected from physical samples.



# ColorGranules™ Unicolors Palette



**Q1010\***  
WHITE



**Q1015**  
EGGSHELL



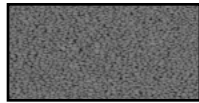
**Q1310\***  
ASH



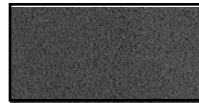
**Q1320**  
SMOKE



**Q1330\***  
GRAVEL



**Q1340\***  
CHARCOAL



**Q1350**  
FLINT



**Q1020\***  
BLACK



**Q1210**  
IVORY



**Q1215\***  
BUTTER



**Q1220**  
BEIGE



**Q1280**  
BUFF



**Q1240\***  
TAN



**Q1230\***  
CAPPUCCINO



**Q1290**  
TOFFEE



**Q1250\***  
TAUPE



**Q1260\***  
SIENNA



**Q1270\***  
BROWN



**Q1630**  
BLUSH



**Q1640**  
APRICOT



**Q1620\***  
CRIMSON



**Q1610**  
RED



**Q1650**  
BORDEAUX



**Q1520**  
ORANGE



**Q1510\***  
GINGER



**Q1710**  
YELLOW



**Q1720\***  
MUSTARD



**Q1410**  
CLOVER



**Q1440**  
LEMONGRASS



**Q1420**  
VINEYARD



**Q1430\***  
RAINFORREST



**Q1150**  
ASPEN



**Q1130\***  
SLATE



**Q1160**  
CAPRI



**Q1140\***  
TEAL



**Q1115\***  
COBALT



**Q1110\***  
BLUE



**Q1120\***  
NAVY



**Q1810**  
PLUM



**Q1820**  
LOGANBERRY

40-S (Broadcast) Grade *All Unicolors In-Stock* | 25-A (Trowel) Grade *\* In-Stock Unicolors*



# *ColorGranules™* Signature Blends



**QB-1001**



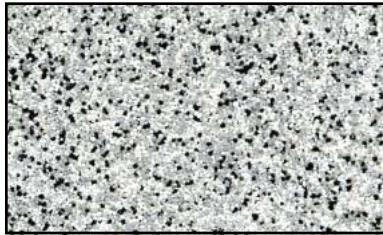
**QB-1002**



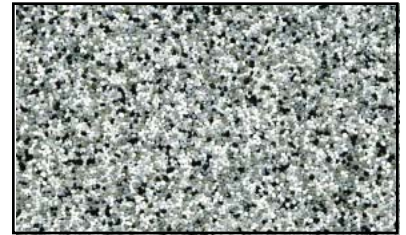
**QB-1003**



**QB-1006**



**QB-1007**



**QB-1008**



**QB-1011**



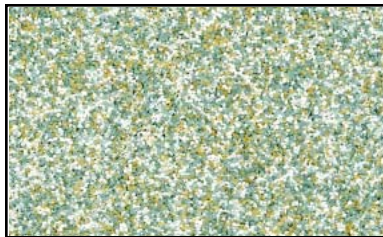
**QB-1012**



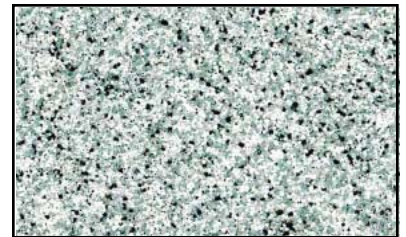
**QB-1013**



**QB-1016**



**QB-1017**



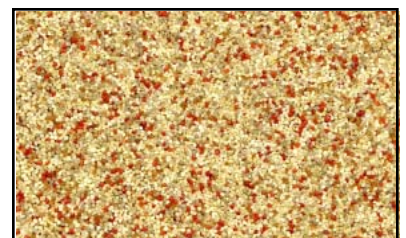
**QB-1018**



**QB-1021**



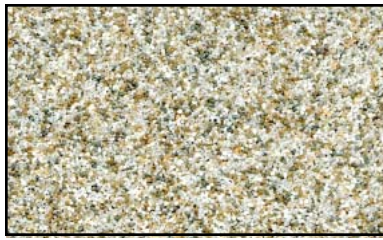
**QB-1022**



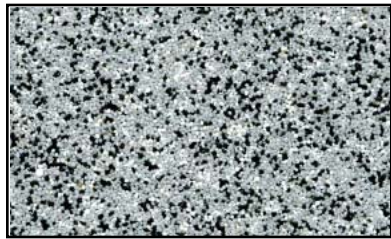
**QB-1023**



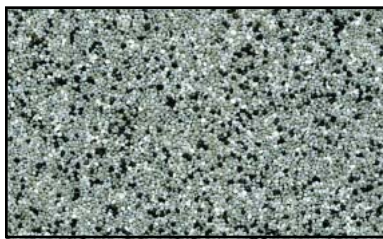
**QB-1004**



**QB-1005**



**QB-1009**



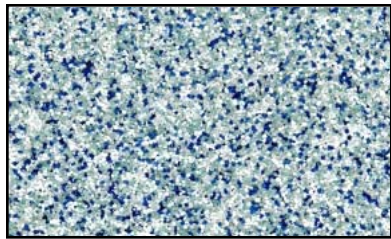
**QB-1010**



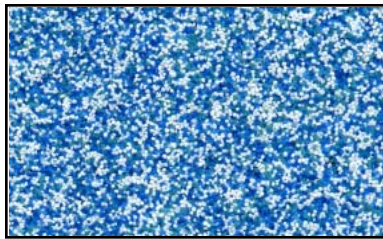
**QB-1014**



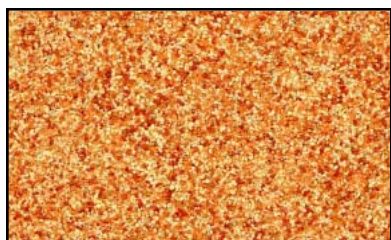
**QB-1015**



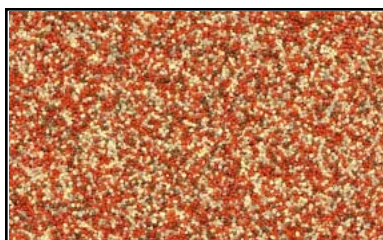
**QB-1019**



**QB-1020**



**QB-1024**



**QB-1025**



# ColorGranules™ – Resinous Flooring Media

For areas where enhanced durability, slip resistance and custom beautification are required.

## Features

## Benefits

### Safe

ColorGranules™ provide resinous flooring with excellent slip resistance to prevent slip and fall injuries and liability.

### Durable

Superior color-fastness, chemical, abrasion and impact resistance for the most extreme heavy-duty environments.

### Decorative

Enhance your high-performance flooring environment by adding custom color and texture to compliment any décor.

### Hygienic

No joints or seams delivers an easy-clean, seamless finish, where no bacteria or dirt can dwell in crevices.

### Custom

Virtually limitless color combinations provide design latitude so that each floor can be customized to suit the environment.

### Renewable

After years of use, efficiently revitalize your resinous flooring system by sanding the surface and applying a new topcoat.

### Economical

ColorGranules™ provide a cost-effective flooring solution with extraordinary resilience under the most demanding conditions.

## Application Environments

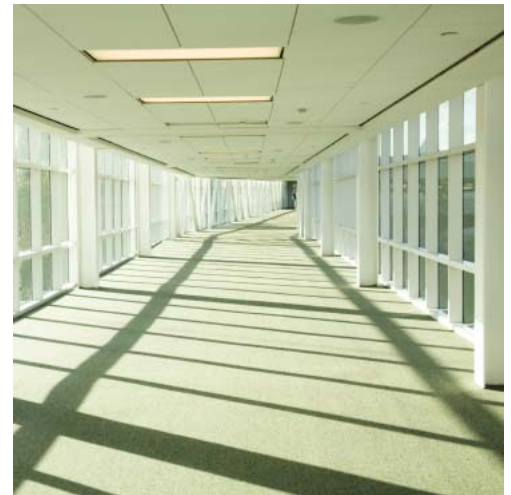
Animal Facilities	Municipalities
Balconies	Museums
Cafeterias	Offices
Churches	Patios
Clean Rooms	Pool Decks
Commercial Kitchens	Prisons / Jails
Control Rooms	Production Floors
Corridors	Ramps
Countertops	Restrooms
Detention Centers	Retirement Homes
Dog Kennels	Schools
Firehouses	Show er Stalls
Food Processing Plants	Show rooms
Garages	Stadiums
Greenhouses	Sunrooms
Hospitals	Veterinary Clinics
Hotels	Walk ways
Laboratories	Walls
Locker Rooms	Zoos



Locker Rooms



Commercial Kitchens



Corridors / Walkways





**Pool Decks**



**Industrial Production Floors**



**Balconies / Patios**



**School Hallways**



**Animal Facilities**



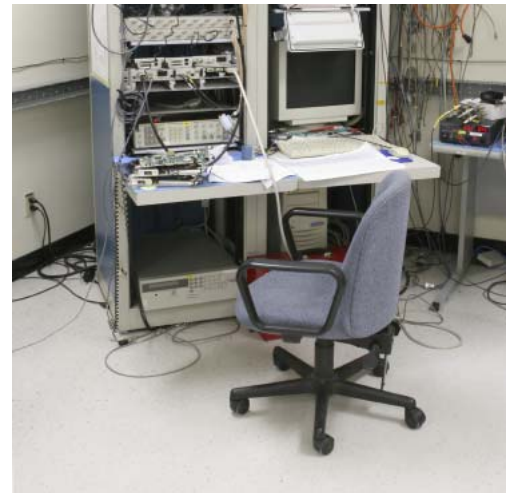
**Cafeterias**



**Laboratories / Clean Rooms**



**Detention Centers**



**Offices**

